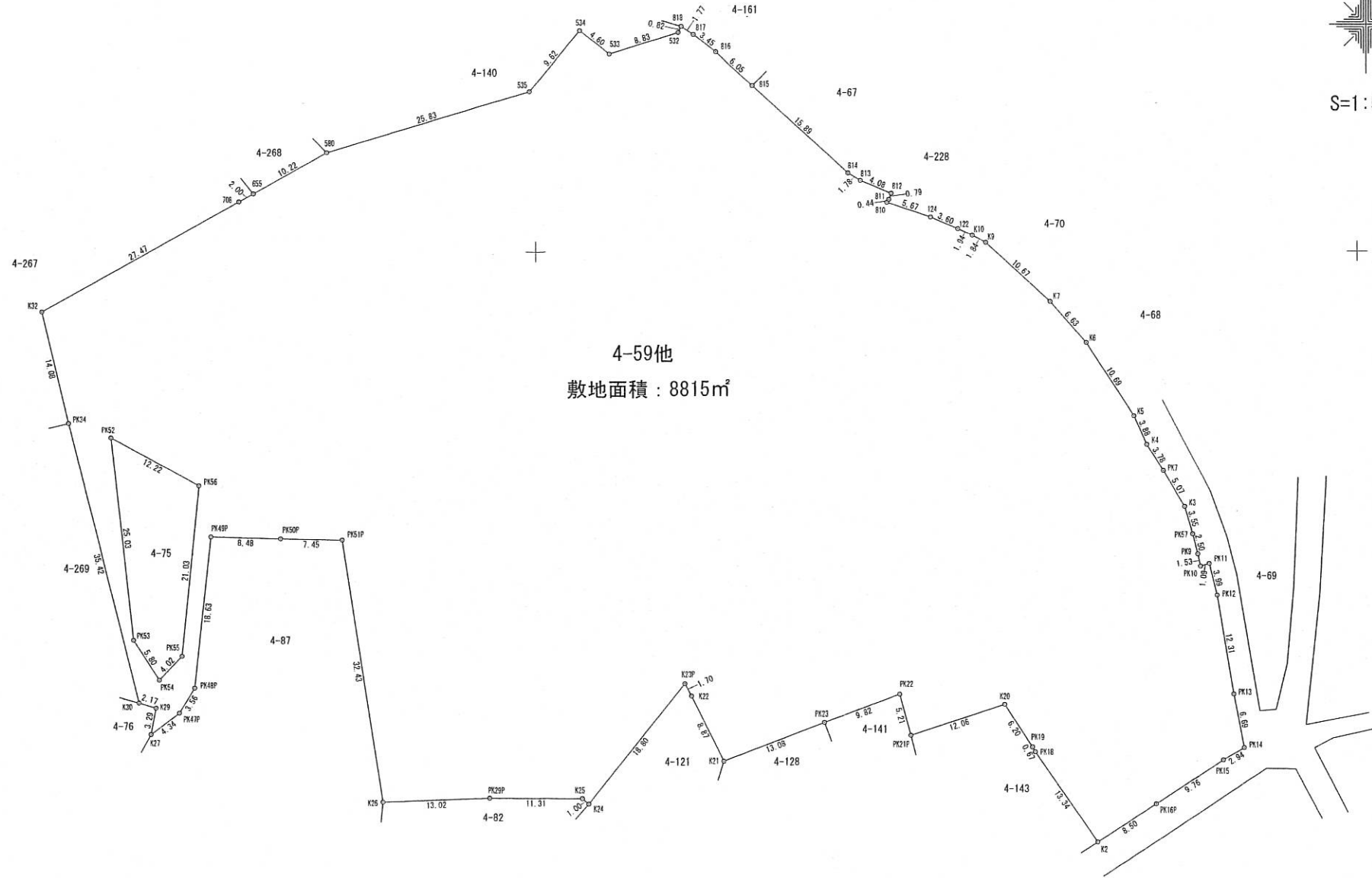


敷地求積図

川西市長尾町4番59他



4-59他
敷地面積：8815m²



地番	4-59他	No.	種類	Xn	Yn	辺長	点間No
818	B	-123572.320	99517.776	1.77	817		
817	B	-123573.315	99519.246	3.45	816		
816	B	-123575.452	99521.963	6.05	815		
815	B	-123579.572	99526.402	15.89	814		
814	B	-123590.397	99538.037	1.78	813		
813	B	-123591.334	99539.552	4.08	812		
812	B	-123592.928	99543.309	0.79	811		
811	B	-123593.672	99543.031	0.44	810		
810	M	-123594.035	99542.771	5.67	124		
124	M	-123595.876	99548.135	3.80	122		
122	M	-123597.309	99551.439	1.94	K10		
K10	M	-123598.098	99553.213	1.84	K9		
K9	M	-123598.999	99554.828	10.67	K7		
K7	M	-123606.261	99562.658	6.63	K6		
K6	M	-123611.275	99567.010	10.69	K5		
K5	M	-123620.267	99572.802	3.88	K4		
K4	M	-123623.817	99574.370	3.78	PK7		
PK7	P	-123627.044	99576.352	5.07	K3		
K3	P	-123631.410	99578.947	3.55	PK57		
PK57	P	-123634.832	99579.897	2.50	PK9		
PK9	P	-123637.257	99580.508	1.53	PK10		
PK10	P	-123638.754	99580.828	1.09	PK11		
PK11	P	-123638.452	99581.877	3.99	PK12		
PK12	P	-123642.326	99582.836	12.31	PK13		
PK13	B	-123654.474	99584.832	6.69	PK14		
PK14	P	-123661.047	99586.087	2.94	PK15		
PK15	B	-123662.531	99583.543	9.76	PK16P		
PK16P	P	-123667.885	99575.381	8.50	K2		
K2	M	-123672.539	99568.267	13.34	PK18		
PK18	P	-123661.561	99560.684	0.67	PK19		
PK19	P	-123660.980	99560.346	6.20	K20		
K20	B	-123655.767	99556.982	12.06	PK21P		
PK21P	B	-123659.542	99545.519	5.21	PK22		
PK22	B	-123654.503	99544.174	9.82	PK23		
PK23	B	-123657.922	99534.963	13.08	K21		
K21	I	-123662.590	99522.744	8.87	K22		
K22	I	-123654.617	99518.837	1.70	K23P		
K23P	B	-123653.104	99518.041	18.80	K24		
K24	I	-123667.771	99506.276	1.00	K25		
K25	I	-123667.116	99505.509	11.31	PK29P		
PK29P	C	-123667.071	99494.196	13.02	K26		
K26	C	-123667.530	99481.183	32.43	PK51P		
PK51P	C	-123635.462	99476.292	7.45	PK50P		
PK50P	C	-123635.256	99468.840	8.48	PK49P		
PK49P	C	-123634.981	99460.363	18.63	PK48P		
PK48P	P	-123653.506	99458.352	3.56	PK47P		
PK47P	P	-123656.559	99456.506	4.34	K27		
K27	I	-123659.177	99453.033	3.29	K29		
K29	C	-123655.943	99453.650	2.17	K30		
K30	C	-123655.302	99451.568	35.42	PK34		
PK34	P	-123620.896	99443.114	5.45	PK52		
PK52	P	-123622.722	99448.252	25.03	PK53		
PK53	P	-123647.619	99450.917	5.80	PK54		
PK54	P	-123652.509	99454.052	4.02	PK55		
PK55	P	-123649.604	99456.835	21.03	PK56		
PK56	P	-123628.670	99458.937	12.22	PK52		
PK52	P	-123622.722	99448.252	5.45	PK34		
PK34	P	-123620.896	99443.114	14.08	K32		
K32	C	-123607.175	99439.915	27.47	708		
708	P	-123593.741	99463.886	2.00	655		
655	P	-123592.760	99465.631	10.22	580		
580	C	-123587.754	99474.544	25.83	535		
535	C	-123580.274	99499.268	9.62	534		
534	C	-123572.851	99505.389	4.60	533		
533	C	-123575.706	99508.997	8.83	532		
532	B	-123573.064	99517.424	0.82	818		
倍面積							-17630.762745
面積							8815.381725
地積							8815.38 m ²
公簿							7789.42 m ²

- I・・・石杭
- C・・・コンクリート杭
- M・・・明示板
- P・・・プラスチック杭
- B・・・金属釘